

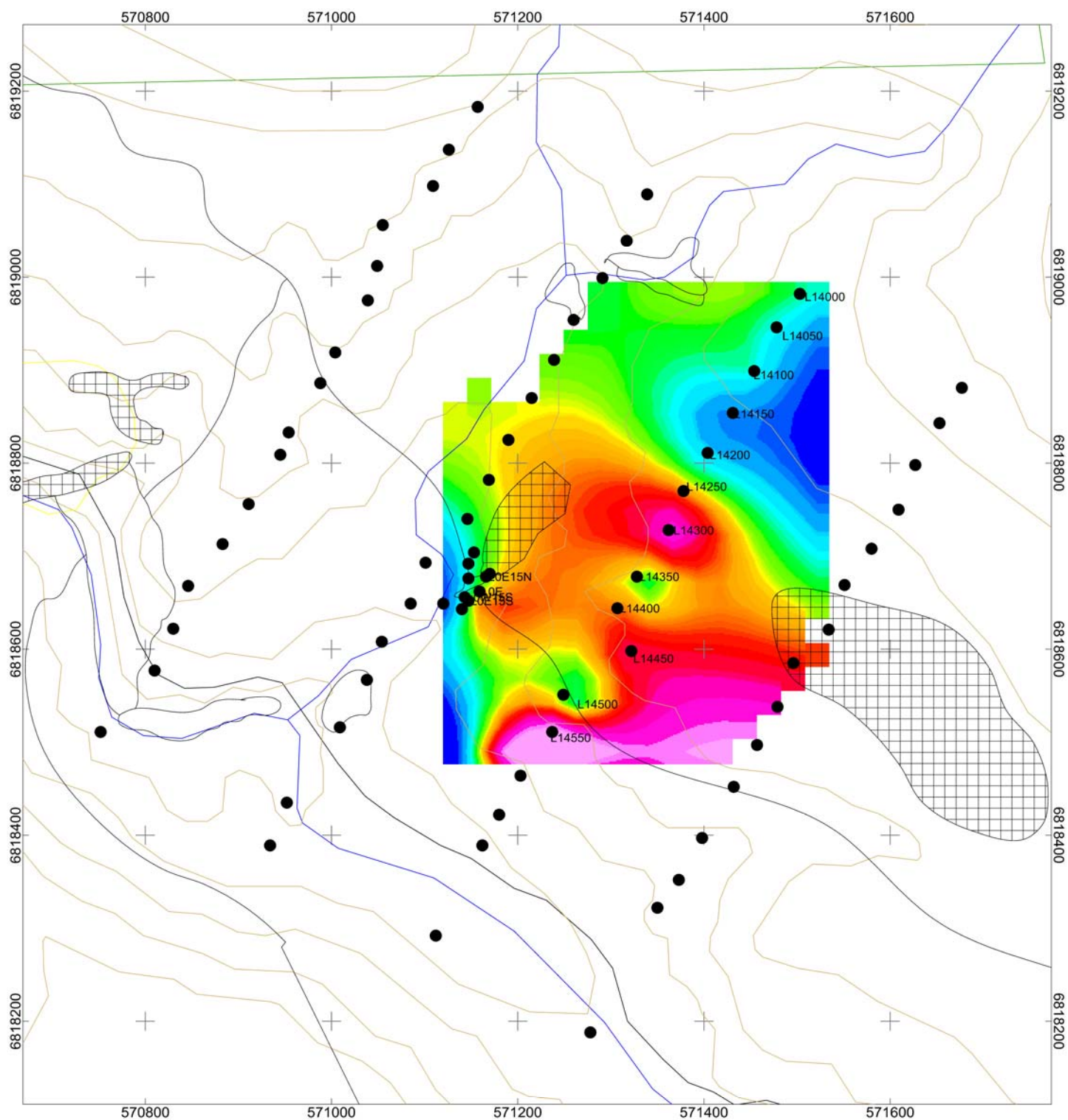
Contoured Labrador Tea Biogeochemistry Cr (ppm)

-0.143 0.468 0.634 0.722 0.824 0.973 1.031 2.104



100 0 100
(meters)
NAD83 / UTM zone 7N





Contoured Labrador Tea Biogeochemistry Cu (ppm)

4.741 5.450 5.886 6.055 6.222 6.418 6.558 8.554



100 0 100

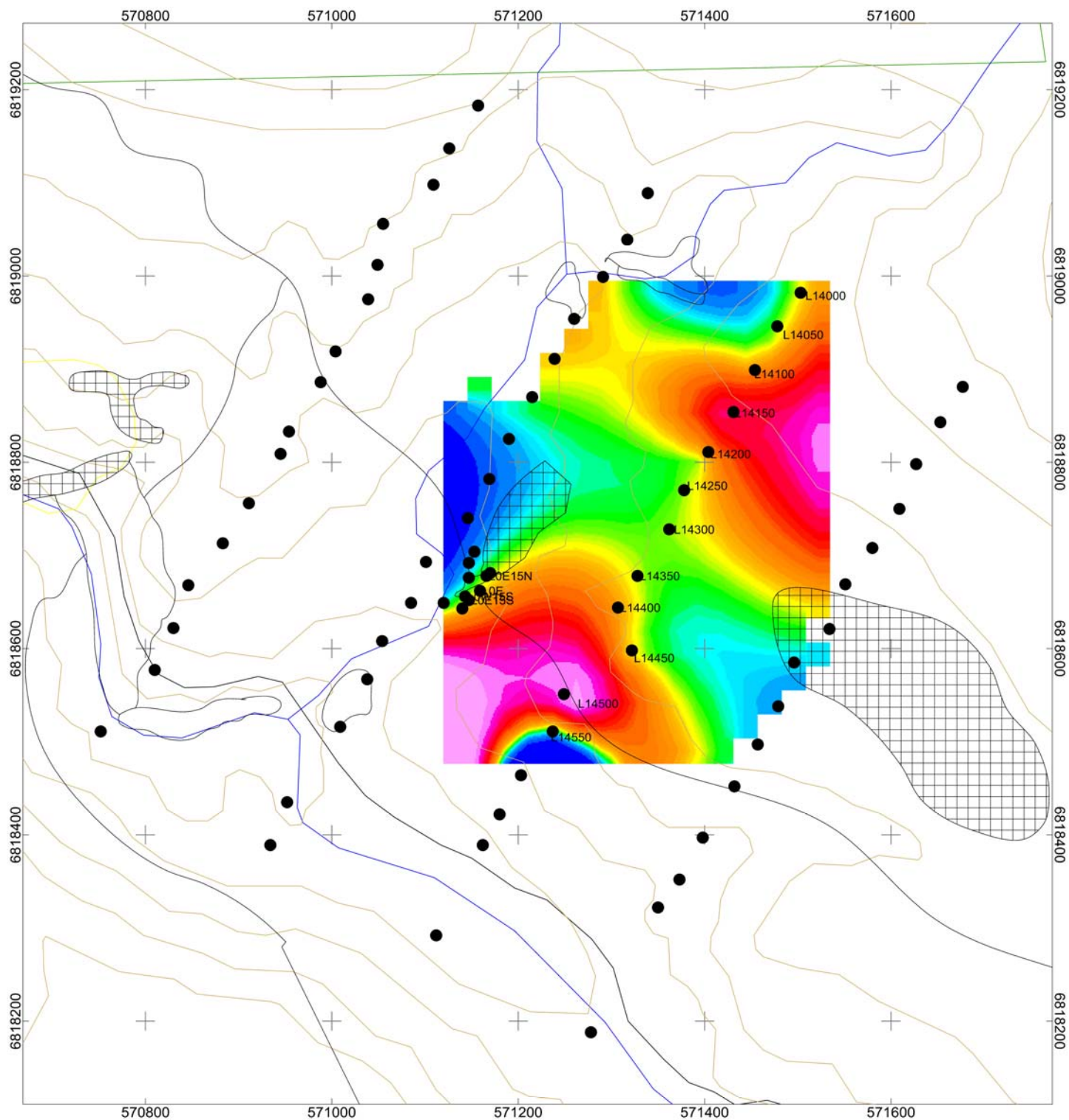
(meters)

NAD83 / UTM zone 7N



ultramafic sill





Contoured Labrador Tea Biogeochemistry

PGE + Au (ppm)

PGE=Pt and Pd

-0.001 0.001 0.001 0.001 0.001 0.002 0.002 0.002 0.007



100 0 100

(meters)

NAD83 / UTM zone 7N



ultramafic sill



